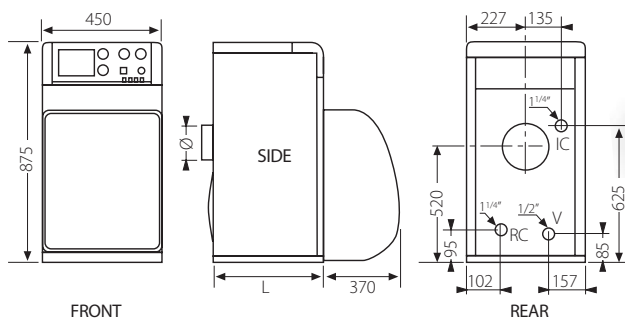




Range of performance: 29-88 kW. (6 Models)



Floor Heating Kit



V: Drain cock
IC: Heating flow
RC: Heating return flow

Models	L mm.	Ø Flue outlet
JAKA FD-30	395	150
JAKA FD-40	495	150
JAKA FD-50	585	150
JAKA FD-60	695	175
JAKA FD-70	795	175
JAKA FD-80	895	175

Equipment

Cast iron body	Thermometer
Easy maintenance	Pressure gauge
Epoxy painted casing	Prepared electrical connection for the circulation pump, the burner and the room thermostat
Control panel with:	
Control thermostat	Max. working pressure: 3 bar
Safety thermostat	Max. working temperature: 95°C
General switch	

Models	Input		Output		Weight	Recommended Burner
	kW	Kcal/h	kW	Kcal/h		
Jaka FD-30	29.3	25,198	27.8	23,908	110	Domestic D3P
Jaka FD-40	40.5	34,830	38.5	33,110	135	Domestic D4P
Jaka FD-50	52	44,720	49.7	42,742	160	Domestic D4P
Jaka FD-60	63.5	54,610	60.7	52,202	185	Domestic D6
Jaka FD-70	75	64,500	71.4	61,404	210	Domestic D6
Jaka FD-80	87.5	75,250	83.3	71,638	235	Domestic D10

Options

24 hr mechanical programmer	
7 days digitally programmer	
Hydraulic kit SRJ1 (FD-30 / FD-40 / FD-50)	
Hydraulic kit SRJ2	
Climatic time switch for kit SRJ1	see page 31
Soundproof cover over oil burner	
Oil burner Domestic	
Hot water tanks SANIT	see page 24